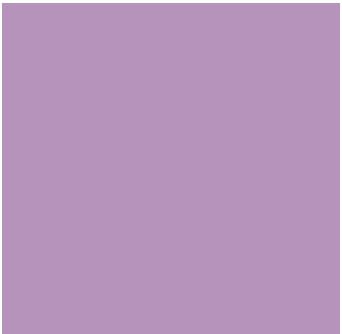
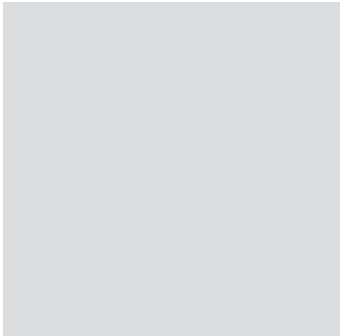


Quality Solid Oak Furniture



Welcome

Your home is important for so many reasons. **It's your own personal space where you have complete control over the way it looks, the way it feels. It's the one place where you can fully express yourself – your individuality and your personality.**

This brochure aims to show you the timeless beauty and unique individuality of **solid oak and offer you a flavour of what's possible.** Use it for ideas and inspiration.

Rest assured that you are purchasing a quality piece of furniture hand crafted using only the finest quality European oak sourced from certified forestry managed sustainable forests.



Your style

Modern, traditional, contemporary – **we don't believe in stereotypes. So we've deliberately** designed the collection outside of these constraints.

Instead we've created solid oak furniture that is eclectic, timeless, useful and functional. It means you can achieve the look and feel you want with the practicality you need.







The centrum

The kitchen is at the heart of every home. A hub where family and friends meet, talk, share and eat. Make it a warm and welcoming place with our solid oak furniture.

Whether you're after a formal or casual dining experience, we offer a selection of tables and chairs to suit your needs. With a choice of finish to enhance the wood and a wide choice of dining chairs and seat covers, you can match or contrast the dining area to compliment the feel of your home.



Fulfilment

It's vital any living area meets both aesthetic and practical needs. We can help you fulfil both.

Flexibility is the key to creating a harmonious living area. With this in mind, we offer a significant choice of cabinets and occasional items. The mix of models will sit comfortably with your choice of upholstery and other furniture.



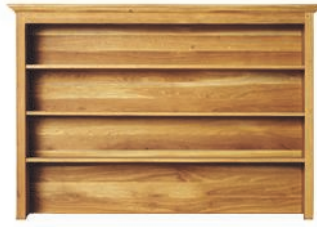


The collection



0129 Sideboard

| | Length | Depth | Height |
|-------------------|--------|-------|--------|
| Metric (mm) | 1180 | 530 | 960 |
| Imperial (inches) | 46.5 | 20.9 | 37.8 |



0131 Top Unit (to fit 0135)

| | Length | Depth | Height |
|-------------------|--------|-------|--------|
| Metric (mm) | 1280 | 360 | 1130 |
| Imperial (inches) | 50.4 | 14.2 | 44.5 |



0132 Top Unit (to fit 0135)

| | Length | Depth | Height |
|-------------------|--------|-------|--------|
| Metric (mm) | 1280 | 360 | 1130 |
| Imperial (inches) | 50.4 | 14.2 | 44.5 |



0146 Small Cupboard

| | Length | Depth | Height |
|-------------------|--------|-------|--------|
| Metric (mm) | 800 | 400 | 770 |
| Imperial (inches) | 31.5 | 15.7 | 30.3 |



0147 Corner Cabinet

| | Length | Depth | Height |
|-------------------|--------|-------|--------|
| Metric (mm) | 780 | 380 | 2000 |
| Imperial (inches) | 30.7 | 15.0 | 78.7 |



0148 Corner Base Unit

| | Length | Depth | Height |
|-------------------|--------|-------|--------|
| Metric (mm) | 780 | 380 | 760 |
| Imperial (inches) | 30.7 | 15.0 | 29.9 |



0135 Sideboard

| | Length | Depth | Height |
|-------------------|--------|-------|--------|
| Metric (mm) | 1280 | 450 | 845 |
| Imperial (inches) | 50.4 | 17.7 | 33.3 |



0136 Sideboard

| | Length | Depth | Height |
|-------------------|--------|-------|--------|
| Metric (mm) | 1650 | 540 | 960 |
| Imperial (inches) | 65.0 | 21.3 | 37.8 |



0145 Sideboard/Server

| | Length | Depth | Height |
|-------------------|--------|-------|--------|
| Metric (mm) | 1150 | 400 | 845 |
| Imperial (inches) | 45.3 | 15.7 | 33.3 |



0202 Small Bookcase

| | Length | Depth | Height |
|-------------------|--------|-------|--------|
| Metric (mm) | 960 | 350 | 1205 |
| Imperial (inches) | 37.8 | 13.8 | 47.4 |



0225 Open Bookcase

| | Length | Depth | Height |
|-------------------|--------|-------|--------|
| Metric (mm) | 1070 | 380 | 2000 |
| Imperial (inches) | 42.1 | 15.0 | 78.7 |



0228 Bookcase

| | Length | Depth | Height |
|-------------------|--------|-------|--------|
| Metric (mm) | 1070 | 380 | 2000 |
| Imperial (inches) | 42.1 | 15.0 | 78.7 |

The collection



0361 Corner TV Unit

| | Length | Depth | Height |
|-------------------|--------|-------|--------|
| Metric (mm) | 1240 | 545 | 540 |
| Imperial (inches) | 48.8 | 21.5 | 21.3 |



0362 TV Unit

| | Length | Depth | Height |
|-------------------|--------|-------|--------|
| Metric (mm) | 1090 | 540 | 470 |
| Imperial (inches) | 42.9 | 21.3 | 18.5 |



0364 Entertainment Unit

| | Length | Depth | Height |
|-------------------|--------|-------|--------|
| Metric (mm) | 1600 | 500 | 550 |
| Imperial (inches) | 63.0 | 19.7 | 21.7 |



0419 Tall Plant Stand

| | Length | Depth | Height |
|-------------------|--------|-------|--------|
| Metric (mm) | 310 | 310 | 890 |
| Imperial (inches) | 12.2 | 12.2 | 35.0 |



0425 Lamp Table

| | Length | Depth | Height |
|-------------------|--------|-------|--------|
| Metric (mm) | 500 | 500 | 560 |
| Imperial (inches) | 19.7 | 19.7 | 22.0 |



0427 Lamp Table

| | Length | Depth | Height |
|-------------------|--------|-------|--------|
| Metric (mm) | 400 | 400 | 560 |
| Imperial (inches) | 15.7 | 15.7 | 22.0 |



0413 Nest of Tables

| | Length | Depth | Height |
|-------------------|--------|-------|--------|
| Metric (mm) | 580 | 430 | 530 |
| Imperial (inches) | 22.8 | 16.9 | 20.9 |



0415 Magazine Table

| | Length | Depth | Height |
|-------------------|--------|-------|--------|
| Metric (mm) | 450 | 250 | 530 |
| Imperial (inches) | 17.7 | 9.8 | 20.9 |



0416 Low Plant Stand

| | Length | Depth | Height |
|-------------------|--------|-------|--------|
| Metric (mm) | 310 | 310 | 660 |
| Imperial (inches) | 12.2 | 12.2 | 26.0 |



0421 Coffee Table

| | Length | Depth | Height |
|-------------------|--------|-------|--------|
| Metric (mm) | 1200 | 600 | 510 |
| Imperial (inches) | 47.2 | 23.6 | 20.1 |



0490 Hall Cupboard

| | Length | Depth | Height |
|-------------------|--------|-------|--------|
| Metric (mm) | 1230 | 440 | 780 |
| Imperial (inches) | 48.4 | 17.3 | 30.7 |



0491 Hall Table

| | Length | Depth | Height |
|-------------------|--------|-------|--------|
| Metric (mm) | 1070 | 340 | 810 |
| Imperial (inches) | 42.1 | 13.4 | 31.9 |

The collection



All our solid oak extending tables feature a concealed centre leaf storage area.



0555 Compact Extending Table

| | Length | Extended | Depth | Height |
|-------------------|--------|----------|-------|--------|
| Metric (mm) | 1200 | 1650 | 750 | 780 |
| Imperial (inches) | 47.2 | 65.0 | 29.5 | 30.7 |



0710 Dining Chair

| | Length | Depth | Height |
|-------------------|--------|-------|--------|
| Metric (mm) | 450 | 430 | 1060 |
| Imperial (inches) | 17.7 | 16.9 | 41.7 |



0713 Dining Chair

| | Length | Depth | Height |
|-------------------|--------|-------|--------|
| Metric (mm) | 450 | 430 | 1060 |
| Imperial (inches) | 17.7 | 16.9 | 41.7 |



0760 Dining Chair

| | Length | Depth | Height |
|-------------------|--------|-------|--------|
| Metric (mm) | 450 | 430 | 1060 |
| Imperial (inches) | 17.7 | 16.9 | 41.7 |

All chairs are available in the following bonded leathers, fabrics and tanned leathers





0535 Small Extending Table

| | Length | Extended | Depth | Height |
|-------------------|--------|----------|-------|--------|
| Metric (mm) | 1350 | 2170 | 900 | 780 |
| Imperial (inches) | 53.1 | 85.4 | 35.4 | 30.7 |



0565 Small Extending Table

0533 Medium Extending Table

| | Length | Extended | Depth | Height |
|-------------------|--------|----------|-------|--------|
| Metric (mm) | 1900 | 2900 | 900 | 780 |
| Imperial (inches) | 74.8 | 114.2 | 35.4 | 30.7 |

0563 Medium Extending Table

0531 Large Extending Table

| | Length | Extended | Depth | Height |
|-------------------|--------|----------|-------|--------|
| Metric (mm) | 2200 | 3200 | 900 | 780 |
| Imperial (inches) | 86.6 | 126.0 | 35.4 | 30.7 |

0561 Large Extending Table

Tables feature two separate extension leaves



0720 Dining Chair

| | Length | Depth | Height |
|-------------------|--------|-------|--------|
| Metric (mm) | 1180 | 530 | 960 |
| Imperial (inches) | 46.5 | 20.9 | 37.8 |



0725 Dining Chair

| | Length | Depth | Height |
|-------------------|--------|-------|--------|
| Metric (mm) | 1180 | 530 | 960 |
| Imperial (inches) | 46.5 | 20.9 | 37.8 |



0811 Dining Chair

| | Length | Depth | Height |
|-------------------|--------|-------|--------|
| Metric (mm) | 440 | 600 | 1020 |
| Imperial (inches) | 17.3 | 23.6 | 40.1 |



Hues & Upholstery

Oak is a beautiful and charming timber. For centuries, its strength and beauty has made it invaluable in the construction of quality furniture. We offer a range of wood finishes and upholstery to ensure your choice blends perfectly with your homes interior.

Wood Finishes



Natural Lacquer



Autumn Leaf



Oiled Finish



Golden Acorn

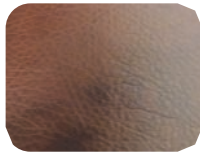
Bonded Leather



Bongo 70



Bongo 25



Bongo 96

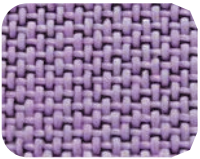


Bongo 22

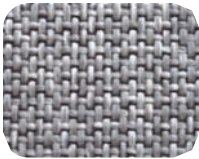


Bongo 23

Fabrics



801 Lilla



901 Fumo



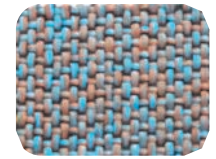
91 Grafite



900 Salvia

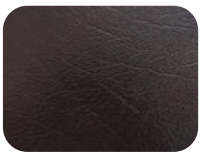


2 Beige



806 Cielo

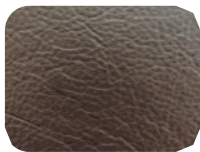
Tanned Leather



Dark Brown



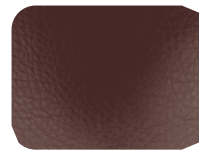
Madras Cream



Uruguay Brown



Uruguay Black



Florida Brown

Solid Wood Furniture Care

Quality wood furniture an investment that cared for correctly, you can expect to last a life time. To maintain its natural beauty and protect your investment, wood furniture needs the right care.

Our wood furniture is coated with furniture lacquer or furniture oil. Besides enriching the grain and adding lustre to solid wood furniture, the finish seals and protects the wood providing long lasting protection from moisture, dirt and regular use.

Solid wood furniture expands and contracts with the variations in temperature and humidity. Each piece of solid wood furniture will react differently depending on the atmospheric conditions within your home. Some slight movement may occur, this is common with solid wood furniture.

Use and Care

There are some simple things you can do to protect your fine furniture during everyday use. Following some of these tips can extend the life of the finish and the furniture itself.

Tablecloths, runners and table mats will provide protection to the surface during regular everyday use of your dining table.

Always use a protective pad when writing with a ballpoint pen on the furniture surface.

Placing your furniture away from windows or blocking direct sunlight will help to protect your furniture from the damaging UV rays.

Felt will protect your table tops from scratches when used on the bottom of lamps, vases and other accessories. Always lift items from a table top, avoid sliding items across a table top as this can abrade and scratch the finish and in extreme cases, the wood surface below.

When enjoying the warm glow from a candle, be sure to place a candle stand or tray underneath the candle to collect any melted wax that may drip or run down the candle.

Cleaning and Polishing

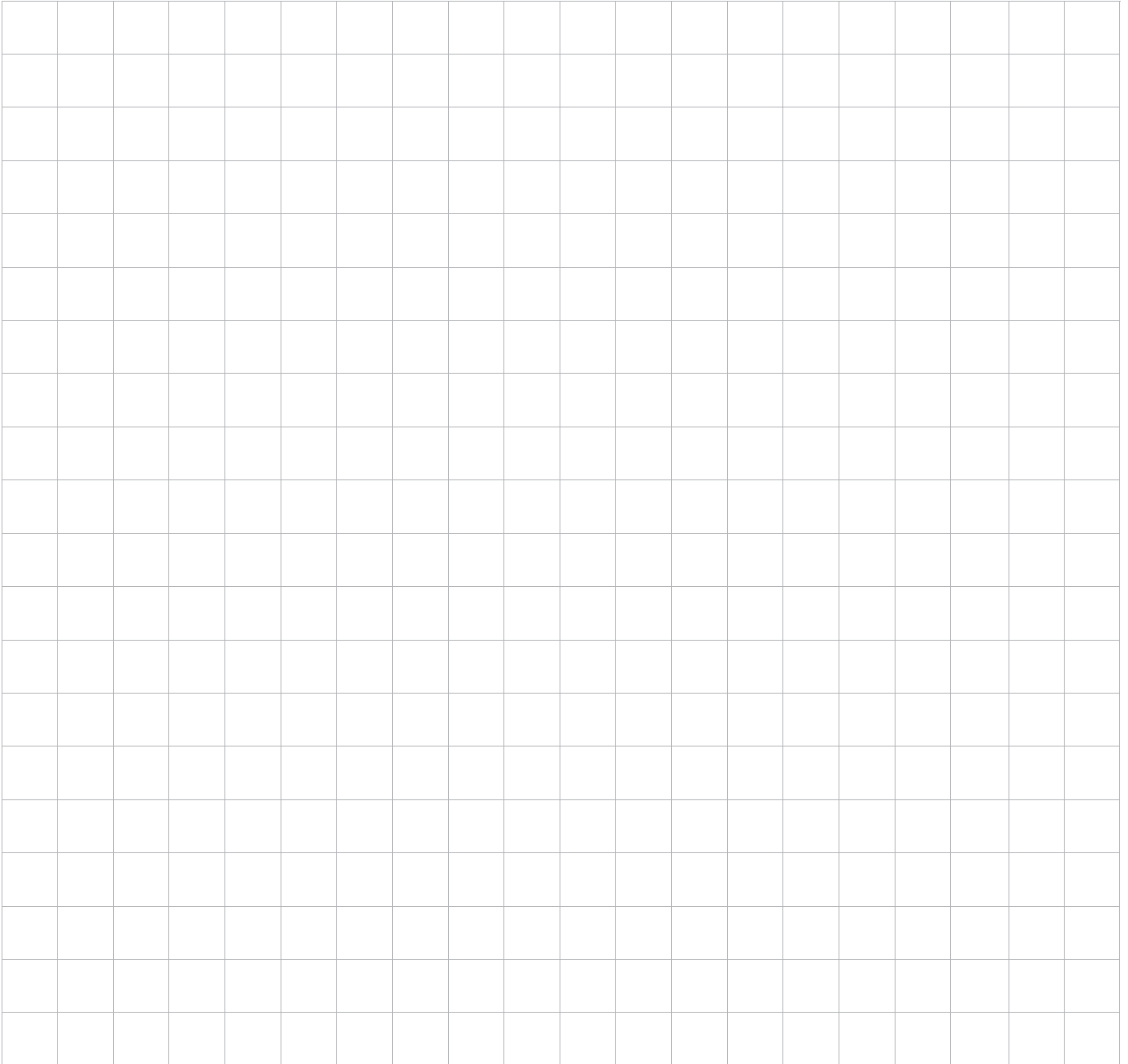
Cleaning your wood furniture regularly will help in maintaining the quality and appearance of your furniture. Dusting and cleaning removes the build-up of grease, lint and dust that can get ground into or soften the finish.

Cleaning your furniture should be done with a soft lint free cotton cloth dampened with water or furniture polish following the pattern of the grain. Cleaning your furniture with a dry rag can cause scratches to the finish. Use a light touch and rotate your cleaning cloth frequently.

For lacquered finishes an occasional light application of quality furniture beeswax polish to protect the cleaned surface is recommended. If you have selected the oiled finish, an occasional light application of boiled linseed oil may be applied if the surface appears to be dry or patchy.



Use the grid below to plan your room



“Have nothing in your houses that you do not know to be useful or believe to be beautiful”

William Morris 1834 - 1896